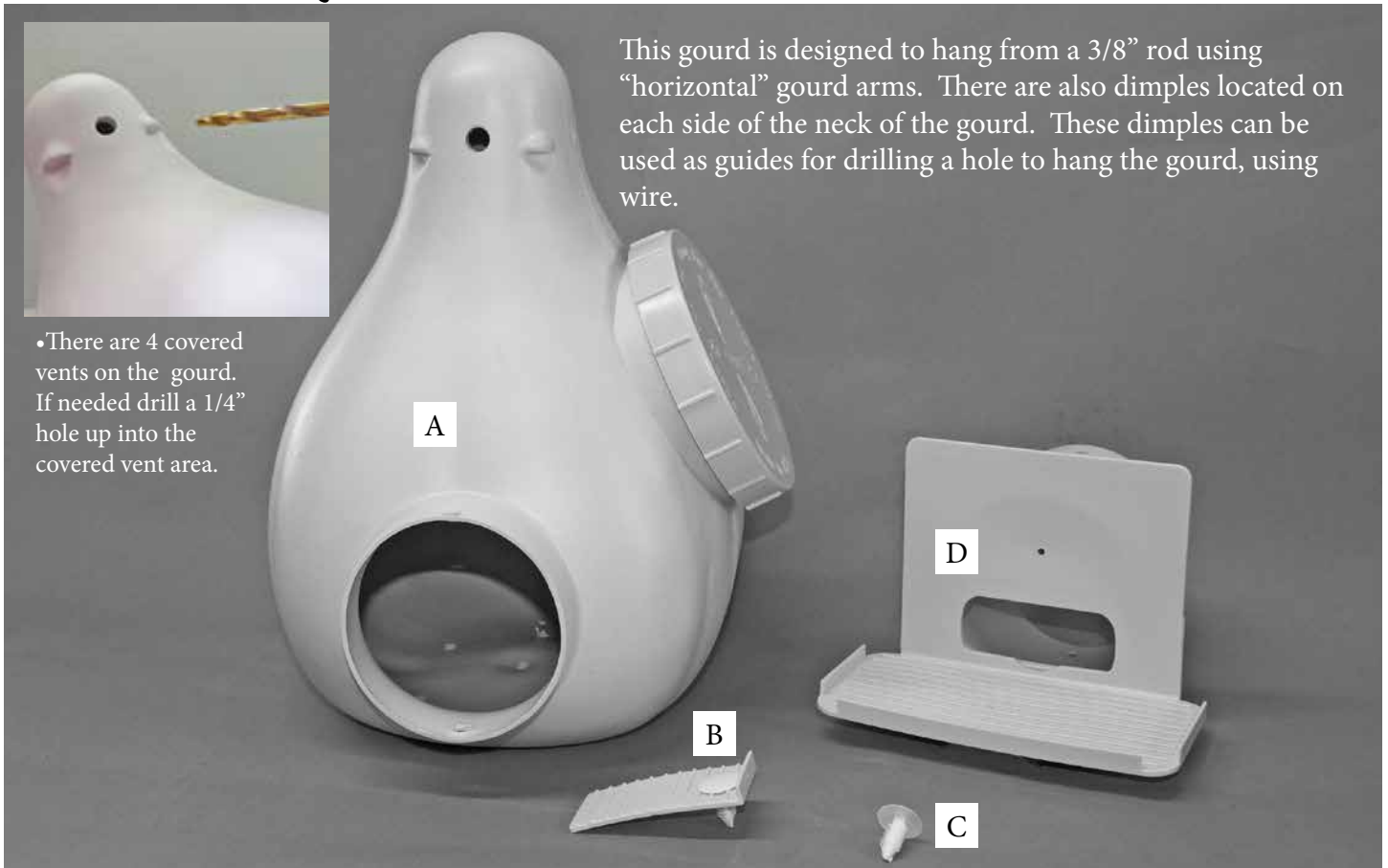


Troyer Vertical Gourd



Parts

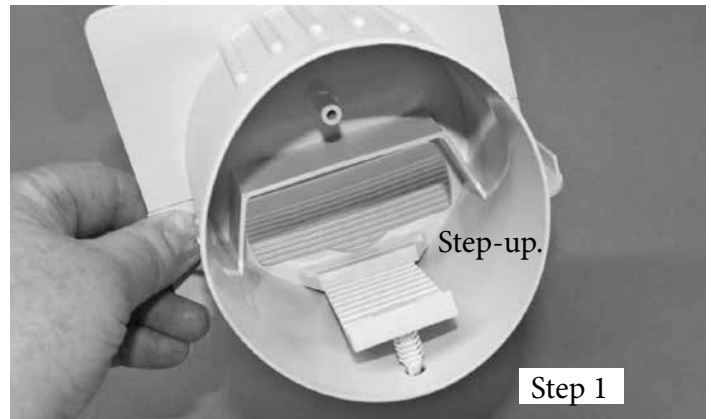
- A) Troyer Vertical Gourd
- B) Traction Tread with Push-in pin inserted
- C) Push-in Pin
- D) Troyer Tunnel Conley II (shown) or also available with Round Hole Entrance

Very Important!!!

***Please be sure to add 2 large handfuls of
pine needles to the
Troyer Vertical Gourd!***

Troyer Vertical Gourd

Step 1) Partially installing the traction into the tunnel. Hold the tunnel in one hand and with the other, push the end of the traction tread that does NOT have the push-in pin, up and underneath the step-up. (The step-up is the small plastic piece that is found on the inside of the tunnel underneath the entrance hole). You will need to push firmly. You feel a snapping sensation as the traction works its way underneath the step-up. **STOP!** When you get the traction tread underneath the step-up your tunnel should look like photo Step 1.



Step 2) Install the tunnel on to the Vertical Gourd collar. Bring your nearly completed tunnel to the collar of the gourd. Slide the tunnel on to the collar. Notice that your TVG has a punched hole at the top and bottom of the collar. You will align the tunnel so that the tunnel slips around the collar, and that the traction tread with its pin is inside the collar with the pin attached to the traction is over the hole of the collar. **DO NOT** push the pin in place yet. See photo Step 2.



Step 3) Get your Push-in Pin part C. This push-in pin is installed by aligning the hole on the top of the tunnel to the hole on the top of the collar. Insert the Push-in pin and push it all the way down till it meets the tunnel.



Step 4) Now we will push the treads pin into the collar. You will do this by placing your hand in to the access port. You may need to push down on the tunnel with one hand, while you push the pin in. This pin will exit the bottom of the collar. Make sure you push the pin all the way.

Step 5) Place 2 large handfuls of pine needles or cedar shavings into the gourd.

Tip! For areas that experience high humidity you may wish to consider our optional vented cap. For more information please check with your supplier.

